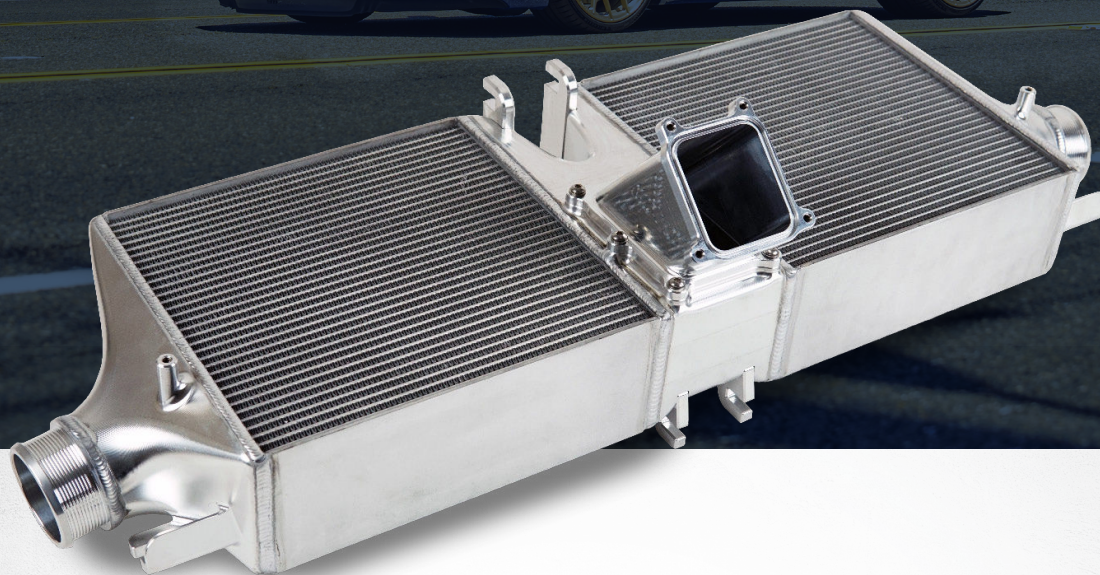


PORSCHE 992 TURBO/TURBO S & 992.2 CARRERA / T / S / 4S / TARGA



CSF PART
#8188

	OEM	CSF/PWR
# OF TUBES	17	33
TUBE HEIGHT	7MM	3MM Rolled Tube
FIN HEIGHT	8MM	4.85MM
WEIGHT	~13.5 LBS	20 LBS
DESIGN	Crimped w/ Gasket Plastic End Tanks	100% TIG Welded CNC Billet End Tanks

MSRP/MAP
\$4,799
USD

HIGH PERFORMANCE INTERCOOLERS

THE BIG POWER AND HEAT-SOAK SOLUTION

- Eliminates Heat Soak and Lower Intake Air Temperatures (IAT) for Maximum Performance in High-Performance and Race Conditions – Especially Critical Due to Intercooler Placement in Engine Compartment
- Formula-1 Performance Grade Cores by PWR (2-Row Cores features Rolled Tubes w/ Inner Fins)

- Highly Engineered, Lightweight Design – Weighing Only 20 lbs.
- 100% TIG Welded vs OEM Crimped Plastic End Tanks for Maximum Strength & Durability
- R&D and Performance Testing by Industry-Leading Porsche Tuning Companies – M-Engineering & World Motorsports

- CNC Machined Billet End Tanks
- Made in the USA at PWR North America
- OEM Style Inlet/Outlet Connections for Precise Fitment With All OEM Components
- True Plug-and-Play “Drop-in Fit” Installation Requires Absolutely No Modifications